

# **North Somerset Council** 8

## **REPORT TO THE CHILDREN AND YOUNG PEOPLE'S SERVICES POLICY AND SCRUTINY PANEL**

**DATE OF MEETING:** 11 SEPTEMBER 2015

**SUBJECT OF REPORT:** PERFORMANCE & FINANCIAL MONITORING

**TOWN OR PARISH:** ALL

**OFFICERS PRESENTING:** ASSISTANT DIRECTOR, SUPPORT AND SAFEGUARDING

**KEY DECISION:** NO

### **RECOMMENDATION**

The Panel is asked to:

Note the financial and performance information presented in the report and to comment on both areas for improvement and areas of good performance.

### **1. SUMMARY OF REPORT**

The Children and Young People's Services Policy and Scrutiny Panel requested regular performance and financial management monitoring reports to help members evaluate the extent to which the Council and its partners are achieving key plans and objectives for children and young people's services and to provide appropriate challenge, praise and suggestions to improve performance.

The Council's Performance Management Framework includes a requirement for regular (at least quarterly) formal monitoring of our financial and performance position so that appropriate remedial action can be taken if needed.

The Panel's June 2015 meeting agreed the content of subsequent 2015/16 monitoring reports and this report presents trends in numbers of Children Looked After, children with a Child Protection Plan and Children in Need receiving support and safeguarding services. Early indications of GCSE and 'A' level results by school are also presented.

### **2. INSPECTION AND IMPROVEMENT**

North Somerset Council's Children's Centre South Group was inspected during June 2015 and was judged to be good, with all sub-categories also being judged as good. Comments in the Ofsted report included:

- Most children and families from priority groups are making use of the services. Particularly good partnership working with health and social care partners ensures families are identified. Most families in the area are registered at the centre.
- Staff go out of their way to make sure families get the quality service they need.
- Staff work sensitively with families and children, including Gypsy, Roma and Traveller families, those who are eligible for funding for early years education and those with additional needs, to provide good quality support and suitable activities.
- Strong partnerships are developed and maintained to provide good quality services to families. The centre works with a wide range of agencies to provide a good range of activities.
- Good strategic leadership and good day-to-day management, together with close monitoring by the local authority, mean this group is in a good position to improve further.

Comments in the report about why the group is not yet outstanding included:

- Strategies to encourage and engage more families to participate in activities have been slow. The participation rate has not increased at the same speed as registrations.
- Systems which check the impact that the centres have on the families they serve have not yet been fully developed. There are no detailed records to show what difference the centres are making to families lives.

Nailsea School was inspected during June 2015 and was judged to be good, with all sub-categories being rated as good as well. This was an improvement from the 'requires improvement' judgement received previously. Comments from Ofsted included:

- Governors and leaders at all levels are very ambitious for the success of the school. They work tirelessly and continue to improve the quality of education students receive.
- Under the strong leadership of the headteacher, the school has improved significantly in recent years so teaching and achievement are good.
- Teaching is good and improving. Teachers create a positive climate for learning where students feel valued and supported. Lessons are carefully planned and made interesting, so that students learn well.
- Effective systems have improved the behaviour and safety of students and these are good. As a result, students attend regularly and attitudes to learning are good and improving.
- The sixth form provision is good. Students follow suitable courses, make good progress and are being well prepared for their future choices.

Ofsted's comments on why the school is not yet an outstanding school included:

- Non-specialist teachers do not always have the skills and detailed subject knowledge to ensure that students make rapid progress.
- Teachers do not always provide enough challenge to enable all students to make the quickest progress and achieve the highest grades.

Wrighton Church of England Primary School was inspected during June 2015 and was judged to be outstanding, with all sub-categories being rated as outstanding as well. This was an improvement from the 'good' judgement received previously.

Comments from Ofsted included:

- Pupils achieve exceptionally well academically, personally, physically and creatively. Children get off to a flying start in the early years. They continue to make outstanding progress from their individual starting points so that their attainment is typically well above average by the end of Year 6.
- Outstanding teaching enables pupils to make outstanding progress in reading, writing and mathematics. Teachers have high expectations and they plan work skilfully to ensure that all pupils are very clear about what is expected of them.
- The inspirational leadership by the headteacher, ably supported by a talented deputy and assistant headteacher and skilled senior leadership team, motivates all staff to give of their best for the benefit of the pupils. This leads to high-quality teaching and outstanding pupils' achievement.
- The governing body is exceptionally well informed, and very effectively challenges all aspects of the school's work, while remaining highly supportive.

Bournville Community Primary School was inspected in May 2015 and was judged to be outstanding, with all sub-categories being rated as outstanding as well. This was an improvement from the 'good' judgement received previously. Comments from Ofsted included:

- Leadership and management are outstanding and have driven the school forward to improve teaching and pupils' learning very successfully since the previous inspection.
- Governors challenge and support the staff very effectively in their efforts to provide high quality teaching, and support and secure rapid progress for all groups of pupils.
- The behaviour of pupils is outstanding. Pupils feel valued and confident at school because they are treated equally and share excellent relationships with staff and with each other.
- A calm and extremely supportive community atmosphere pervades the school. It is clearly visible in the exemplary role models demonstrated by staff, which pupils strive willingly to follow as they give of their best in learning.
- The quality of teaching is outstanding across the school. The teachers' skill and determination in securing the pupils' readiness to learn is successful in raising their aspirations and sustaining excellent progress.
- The school uses additional government funding, such as the pupil premium, highly effectively. As a result, disadvantaged pupils supported by the extra teaching and adult guidance provided through this funding make excellent progress in their academic and personal and social development.

Ferngate private children's home providing accommodation for up to 6 children with emotional or behavioural difficulties was inspected during June 2015 and was judged to be outstanding. Comments from Ofsted included:

- Young people live in a home that nurtures them and positive attachments are built with staff and other young people.

- Young people are listened to and involved in decision making about their lives and their home,
- Young people at risk of child sexual exploitation or that have been exploited are dealt with sensitively resulting in them feeling able to disclose information.

### **3. KEY CORPORATE PERFORMANCE INDICATORS**

The Council has revised its basket of Key Performance Indicators which are monitored quarterly by the Corporate Management Team and reported to members. There are five key indicators for children's services and the quarter 1 performance against these key indicators is shown in Appendix 2.

One key indicator on pupil attainment is annual and performance for three of the remaining four indicators (75%) was not on target, with the fourth being within tolerance. The two indicators relating to child protection are based on relatively small numbers early in the year and so individual families can significantly affect the overall percentages. A watching brief is required at this stage and with further work carried out should the numerators remain too low.

### **4. NUMBERS OF CHILDREN LOOKED AFTER**

When a child becomes 'Looked After' the Council takes on a parenting role, either with the agreement of the parents or through a court order which gives the local authority a share of parental responsibility for that child. Children Looked After cease to be Looked After on reaching their 18th birthday, if they have not ceased previously. Trends in numbers Children Looked After are shown in Appendix 1.

Members are aware from previous reports that numbers of Looked After children increased sharply in 2012, rising from 231 on 31 March 2012 to 279 on 31 December 2012, an increase of 21%. This was partly due to a number of large sibling groups starting to be Looked After and also due to increases in the numbers of 0-4 year olds and 16 or 17 year olds starting to be Looked After. During the 3 years from June 2009 to June 2012 the number of Children Looked After had generally ranged from 220 to 240.

During 2013 there was a steady decrease in the number of Children Looked After to 204 on 31 December 2013, with relatively few children having started to be Looked After. During 2014 the number of Children Looked After increased slowly and stabilised at around 230, until it decreased more recently to below 220, again due to relatively few children starting to be looked after.

The reasons for increases and decreases in numbers of Children Looked After are complex. The Assistant Director and Service Leaders are tightly monitoring all requests for a child to be Looked After. Every Child Looked After is being reviewed to ensure that care plans are being progressed and plans to return children home wherever possible are being actioned.

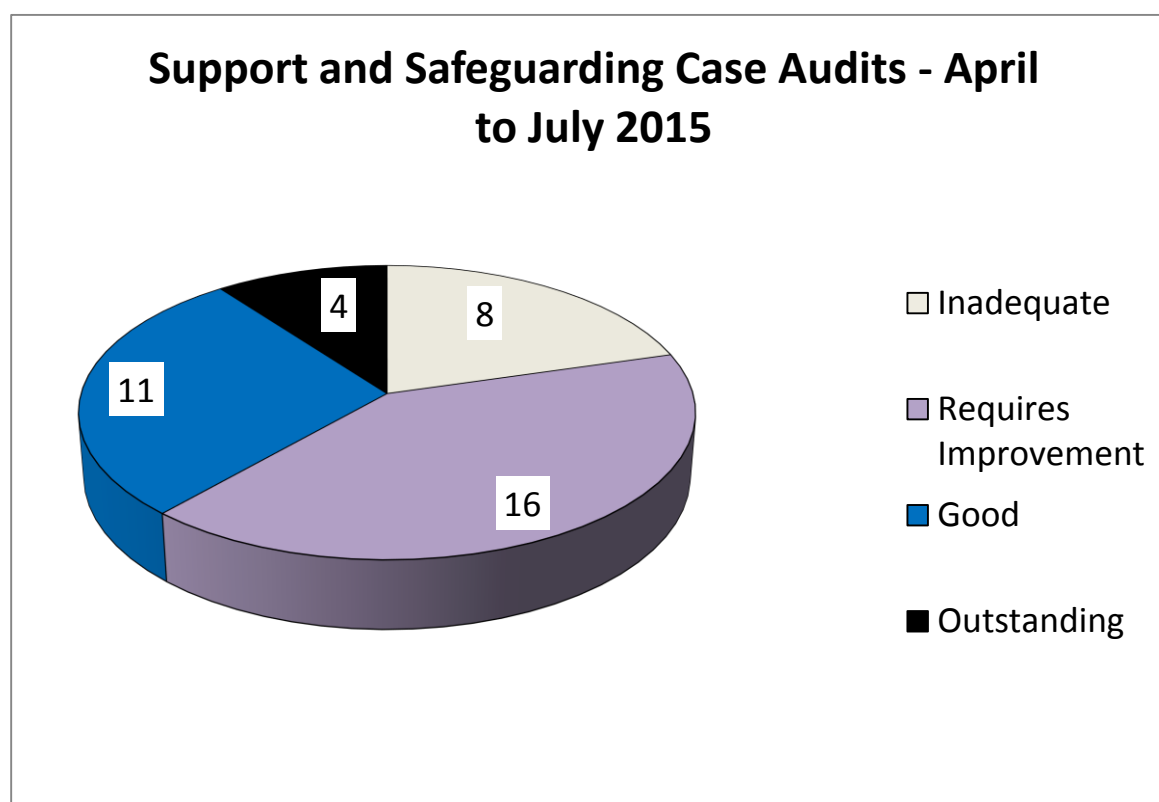
### **5. FINANCIAL MONITORING**

The Directorate is projecting to overspend its budget in 2015/16 mainly due to the costs of placements for Children Looked After.

## 6. CASE AUDITS

Case audit is an important tool to ensure quality and consistency and promote a culture of learning and improvement. There is a programme of regular case audit undertaken by managers in the Support and Safeguarding Branch and the programme for audits to 2017 was attached to the last report. Members of the Directorate Leadership Team (DLT) audit a case, chosen at random, monthly as a routine part of the Leadership Team meeting and, in addition, the North Somerset Safeguarding Children Board undertakes a programme of multi agency audits.

The audit process within the Support and Safeguarding Branch involves grading the cases sampled and a summary of the gradings for 39 cases is shown in the chart below. Overall, 38% of these case audits resulted in a good or outstanding grading, compared to 53% during the year 2014/15. This deterioration is thought to be due to higher standards being sought locally in response to the raised bar from Ofsted. The findings from these case audits are fed back to teams and individual workers as appropriate.



## 7. WHAT ARE THE TRENDS IN NUMBERS OF CHILDREN LOOKED AFTER, CHILDREN IN NEED AND CHILDREN WITH A CHILD PROTECTION PLAN RECEIVING SUPPORT AND SAFEGUARDING SERVICES?

Trends in numbers of children who are Looked After, children with a Child Protection (CP) plan and other Children in Need can be found in Appendix 3.

Following on from item 4, the number of Children Looked After has decreased during 2015, but the rate per 10,000 0-17 year olds remains significantly above the average rate of North Somerset's family of similar authorities. However, the rate is still lower than the England average.

The number of Children in Need who are not Looked After and do not have a CP plan has been decreasing since November 2014 and in July 2015 was half the latest available rate for England (March 2014). The NSC rate, at 168 CiN per 10,000 0-17 year olds, was also significantly below the latest average rate of NSC's family of similar councils (March 2014), which was 306 per 10,000 0-17 year olds.

The observed reduction in the number of CiN may be due in part to an initiative to improve data quality and also to cases starting to be transferred from the Disabled Children's Team to Early Help, before being closed to Support and Safeguarding. NSC has clarified thresholds and there is a more comprehensive Early Help offer, which means cases are being held appropriately at that level. As more cases are transferred to Early Help the number of CiN is likely to decrease further.

The number of children with a Child Protection Plan has been decreasing during 2015 and the rate per 10,000 0-17 year olds is now significantly lower than both the average of North Somerset's group of similar authorities and the England average. The number of families involved with the child protection system tends to fluctuate over time less than the number of children. There are usually between 40 and 70 families involved in the child protection system in North Somerset and the total is currently within that range.

## **8. INDICATIVE 'A' LEVEL AND GCSE RESULTS BY SCHOOL**

Appendix 4 shows the results collected on results day from each relevant school in North Somerset, with a breakdown of different measures. Key points are listed below.

### **'A' Levels**

In 2015 a lower percentage of students across England achieved the top A\* or A grades than in 2014. Results in North Somerset were slightly lower than those for England, with an average pass rate of 97.6%, compared to 98.1% nationally.

The results in North Somerset were relatively similar to those achieved in 2014. The percentage achieving A\*-A grades in North Somerset decreased slightly from 23.9% to 23.6%. However, the average points score per 'A' level increased marginally in North Somerset, when compared to 2014.

Clevedon School and Backwell School achieved highly and, along with St. Katherine's School, showed improved results compared to 2014. Students from Churchill Academy and Sixth Form and Nailsea School did not achieve as highly as last year.

## **GCSEs**

The headline measure of 5+ GCSEs at A\*-C (or equivalent), including English and Maths GCSEs was 58.8% in North Somerset, down by 1.4% from the 2014 figure, but still better than the 2014 England average of 53.4%. This measure was achieved by 74% of pupils at Backwell School, a decrease from 81% in 2014 and was achieved by 73% and 69.9% of pupils at Gordano School and Priory Community School – an Academy Trust respectively, an improvement for both schools. Broadoak College increased its percentage by 11.3% to 52.3%, but Worle Community School and Hans Price Academy both deteriorated by almost 10% compared to 2014, with 43.2% and 37.5% of pupils achieving the measure respectively. The DfE floor standard for this measure in 2015 was 40%, so Hans Price Academy attainment was below floor standard.

In North Somerset, 61.6% of pupils achieved A\*-C grades in both English and Maths GCSEs, better than the England 2014 average of 55.5%. Overall, 94.6% of North Somerset pupils achieved 5+ GCSEs at A\*-G, an increase of 0.6% from 2014 and 4.9% higher than the 2014 England average.

Of note is that 85.8% of pupils at Priory Community School obtained an A\*-C in English or English Language GCSE and 86.6% of Backwell School's pupils achieved a Maths GCSE at A\*-C. Backwell School and Priory Community School both had over 80% of their pupils obtaining 2 A\*-C GCSEs in science, compared to 9.2% at Hans Price Academy. 42.9% of pupils at Backwell School achieved A\*-C grades in all subjects that qualified them for an English Baccalaureate.

The Average Capped Points Score of the best 8 GCSEs obtained by pupils, including English and Maths, decreased in North Somerset by 6% when compared to 2014, but was still 4.6% better than the England 2014 average.

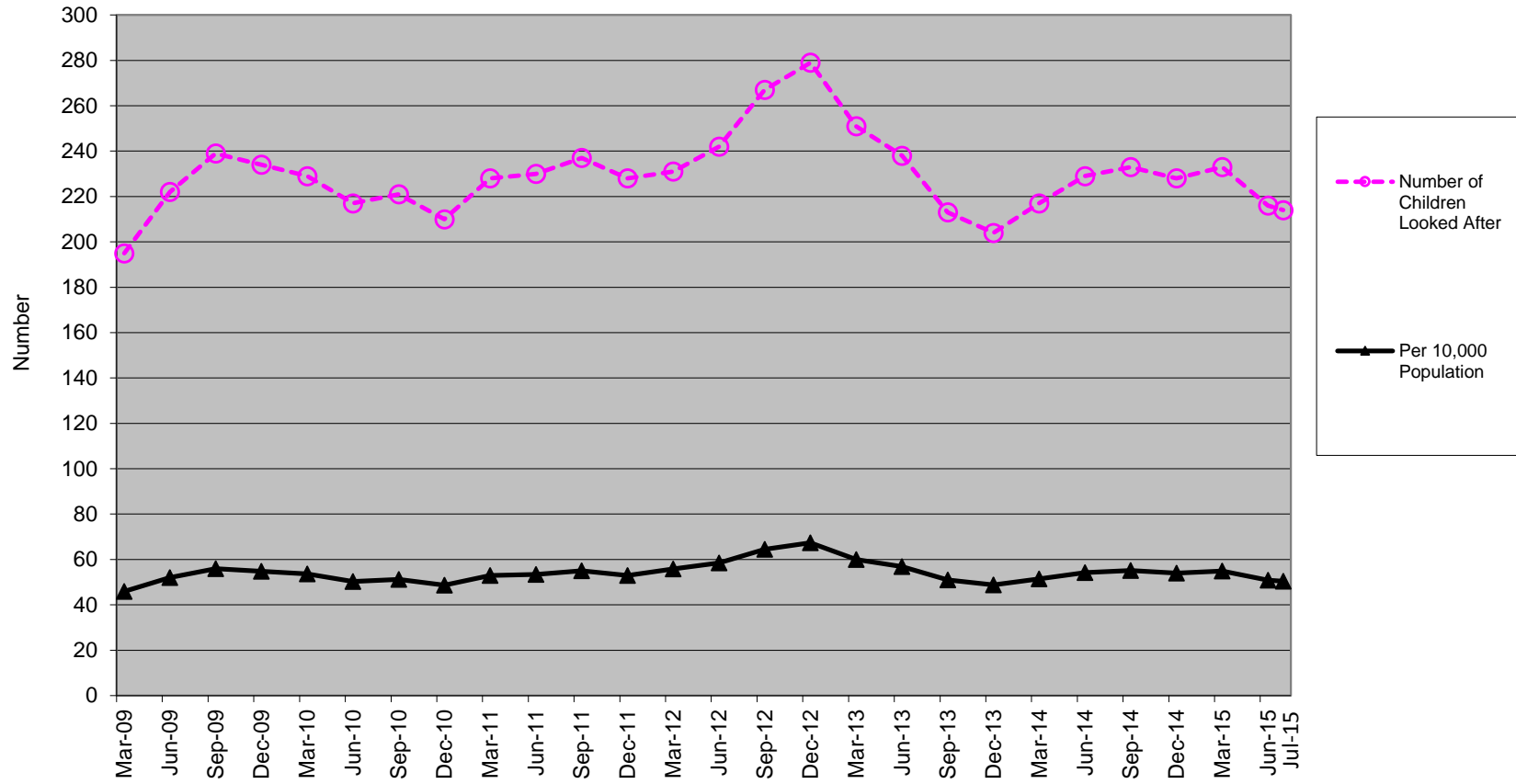
Results for a group of pupils at Clevedon School were not available due to examination board issues and Churchill Academy and Sixth Form was unable to supply accurate figures for all measures on Results Day, so the North Somerset averages are likely to change.

## **Authors**

Malcolm Lane, Management Information Manager and Trevor Isaac, Service Accountancy and Development Manager

# Appendix 1

## Numbers of Children Looked After at the end of each quarter or month

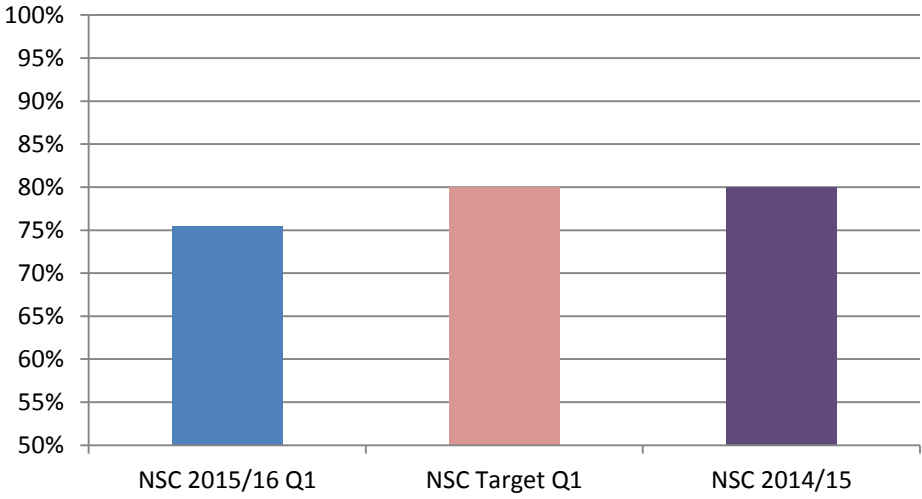




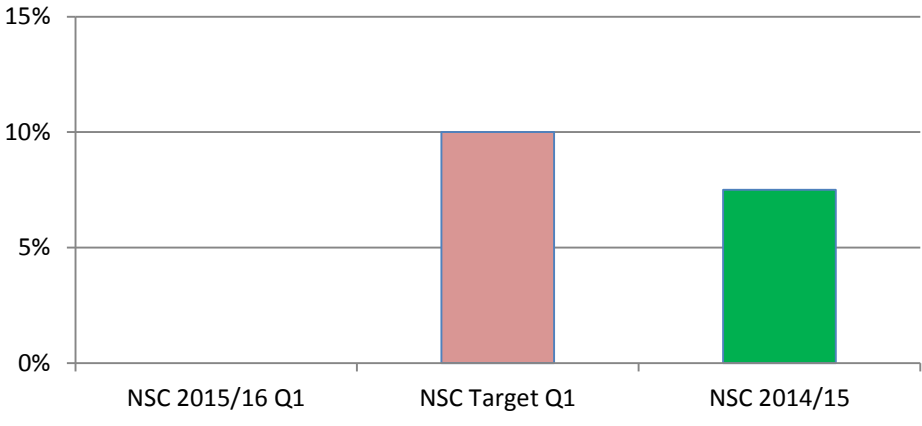
## APPENDIX 2 - Performance summary for Key Corporate Performance Indicators

	<b>NSC 2015/16 Q1</b>	NSC Target Q1	NSC 2014/15	Statistical Neighbour LAs average 2012	England 2012	Met target?
Early Years: Percentage of eligible and checked two year olds who take up funding for free early education and childcare.	<b>75.50%</b>	80%	80%	local definition	local definition	N
The percentage of children becoming subject to a child protection plan for the second or subsequent time, within 2 years of the first plan end date.	<b>0.0%</b>	10.0%	7.5%	N/A	N/A	N
The percentage of child protection referrals of children made within 12 months of a previous child protection referral	<b>0.0%</b>	9.0%	6.6%	local indicator	local indicator	N
The percentage of 17 year olds who are participating in education (including part-time) or work-based learning.	<b>91.9%</b>	93.0%	92.9%	84.1%	85%	Within tolerance

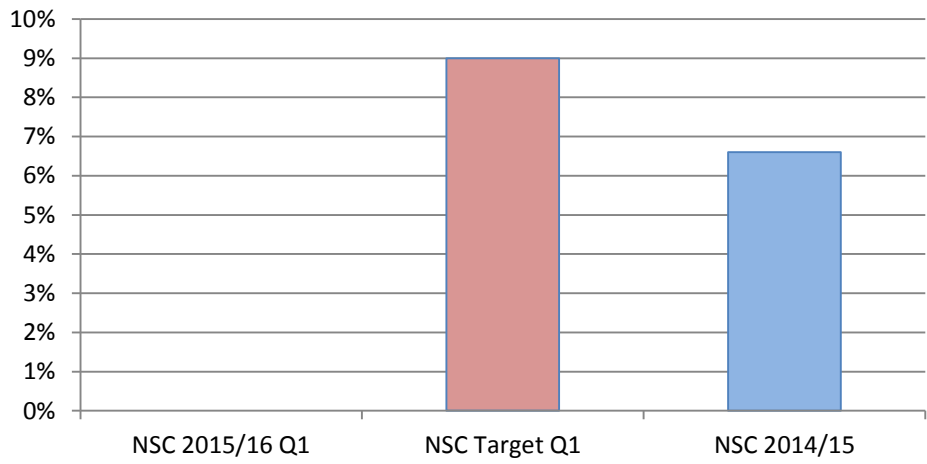
**Early Years: Percentage of eligible and checked two year olds who take up funding for free early education and childcare.**



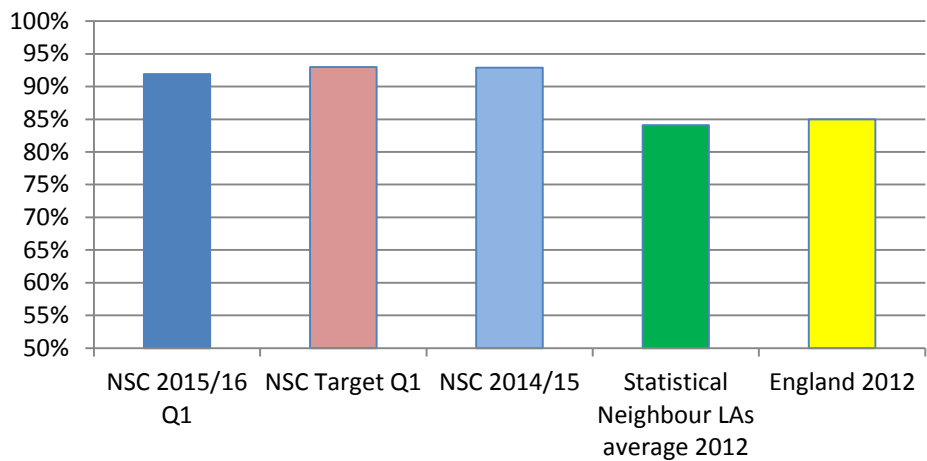
**The percentage of children becoming subject to a child protection plan for the second or subsequent time, within 2 years of the first plan end date.**



**The percentage of child protection referrals of children made within 12 months of a previous child protection referral**



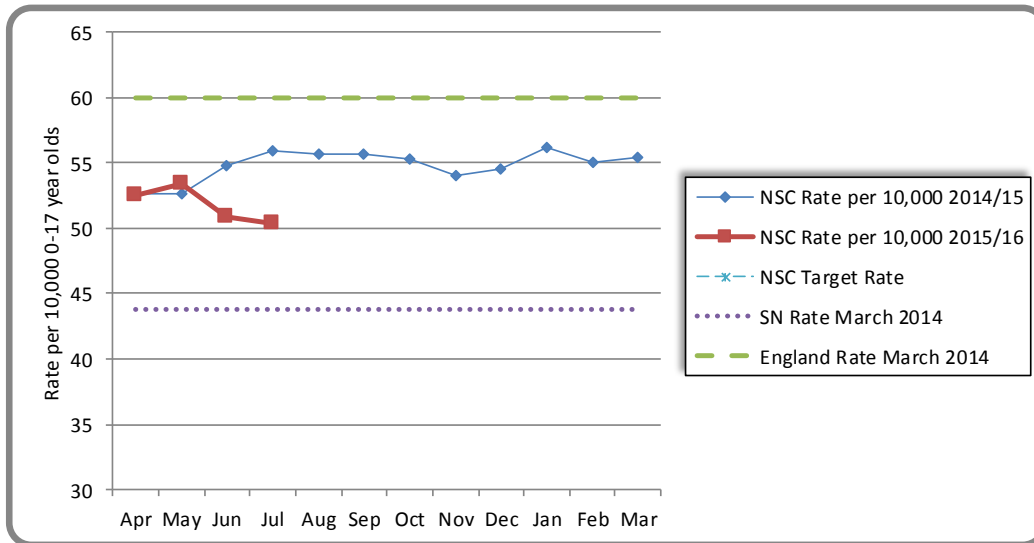
**The percentage of 17 year olds who are participating in education (including part-time) or work-based learning.**



**APPENDIX 3 : TRENDS IN NUMBERS OF CHILDREN LOOKED AFTER, CHILDREN IN NEED AND CHILDREN WITH A CHILD PROTECTION PLAN**

**Number of children who are Looked After and rate per 10,000 0-17 year olds with comparators**

Month	2014/15		2015/16	
	No. CLA	Rate per 10,000	No. CLA	Rate per 10,000
Apr	220	52.6	223	52.5
May	220	52.6	227	53.4
Jun	229	54.8	216	50.9
Jul	234	56.0	214	50.4
Aug	233	55.7		
Sep	233	55.7		
Oct	231	55.2		
Nov	226	54.0		
Dec	228	54.5		
Jan	235	56.2		
Feb	230	55.0		
Mar	232	55.5		



The number of Children Looked After has decreased significantly in the last two months and is at its lowest number since February 2014.

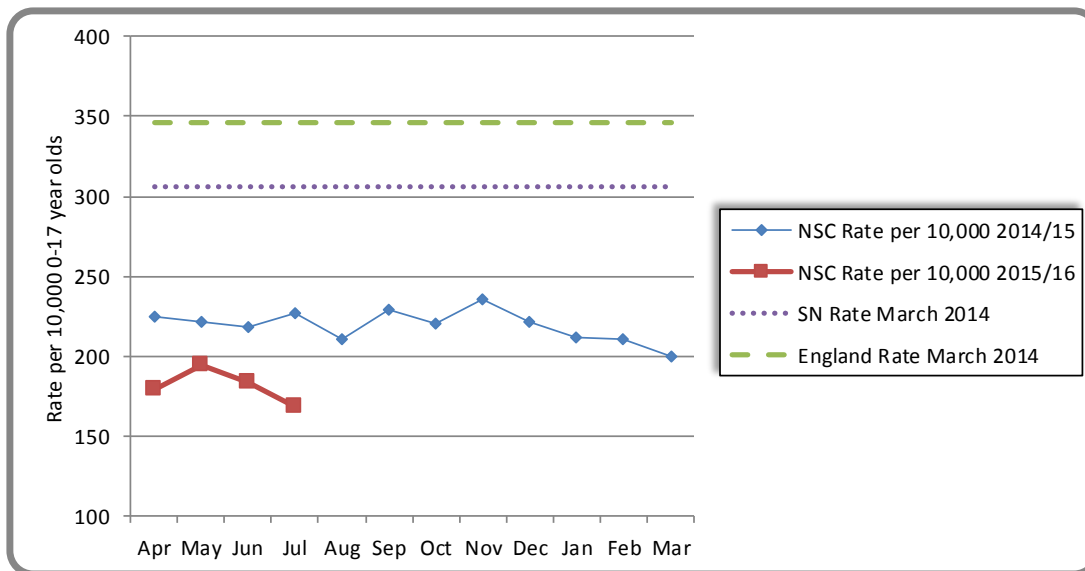
The rate per 10,000 0-17 year olds in North Somerset is below the March 2014 England average of 60, but is higher than the March 2014 average for the Statistical Neighbour local authorities which was 43.8 per 10,000.

No target has been set for 2015/16 however actions continue to be employed within the Support and Safeguarding Branch to control the numbers of Children Looked After.

**Key:** SN - Average of Statistical Neighbour local authorities, which are the 10 most similar to NSC.  
**Note:** The figures are a snapshot at the end of the month.  
 The chart's rate axis does not start at zero

## Number of Children in Need (excluding CP & CLA) and rate per 10,000 0-17 year olds with comparators

Month	2014/15		2015/16	
	No. CiN	Rate per 10,000	No. CiN	Rate per 10,000
Apr	941	225.0	763	179.6
May	924	221.0	824	194.0
Jun	912	218.1	779	183.4
Jul	947	226.5	715	168.3
Aug	882	210.9		
Sep	960	229.6		
Oct	920	220.0		
Nov	983	235.1		
Dec	924	221.0		
Jan	886	211.9		
Feb	883	211.2		
Mar	836	199.9		



This information excludes those children who were subject to a Child Protection Plan or who were Looked After. No target is set for the number of Children in Need.

From a high of 983 CiN in November 2014, the figure has shown a gradual decrease. The data quality on LCS is being improved by teams and the observed reduction in the number of CiN may be due in part to this and also to cases starting to be transferred from the Disabled Children's Team to Early Help, before being closed on LCS. NSC has clarified thresholds and there is a more comprehensive Early Help offer, which means cases are being held appropriately at that level.

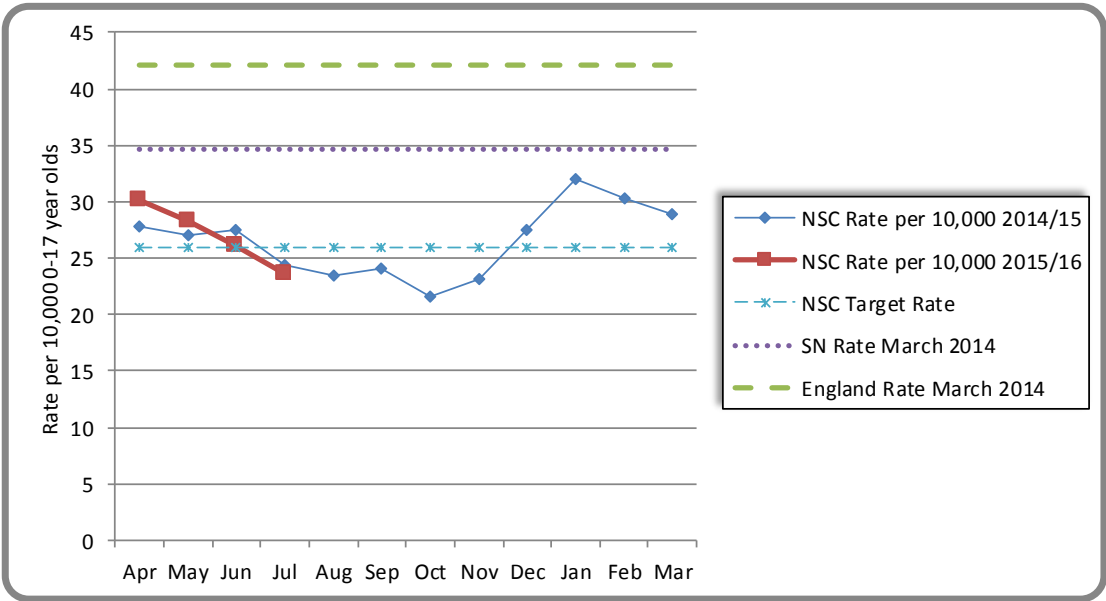
**Key:** SN - Average of Statistical Neighbour local authorities, which are the 10 most similar to NSC.

**Note:** The figures are a snapshot at the end of the month and may differ from those published elsewhere previously due to data cleaning that took place on ICS in July 2012.

The chart's rate axis does not start at zero

## Number of children with a Child Protection Plan and rate per 10,000 0-17 year olds with comparators

Month	2014/15		2015/16		
	No. with CP Plan	Rate per 10,000	No. with CP Plan	Rate per 10,000	Target No.
Apr	116	27.7	128	30.1	110
May	113	27.0	120	28.3	110
Jun	115	27.5	111	26.1	110
Jul	102	24.4	100	23.5	110
Aug	98	23.4			110
Sep	101	24.2			110
Oct	90	21.5			110
Nov	97	23.2			110
Dec	115	27.5			110
Jan	134	32.0			110
Feb	127	30.4			110
Mar	121	28.9			110



There was a large rise in the number of children with a Child Protection Plan from November 2014 to January 2015, after which the number has reduced again. The number of children with a Child Protection Plan has been below the target number for the last 2 months.

The rate of children with a CP Plan per 10,000 0-17 year olds is consistently below the England and statistical neighbours averages.

Chairs will monitor to ensure that children meet threshold, that children are appropriately subject to plans and that there is timely, safe discharge from plans

**Key:** SN - Average of Statistical Neighbour local authorities, which are the 10 most similar to NSC.  
**Note:** The figures are a snapshot at the end of the month.



## APPENDIX 4: INDICATIVE 'A' LEVEL AND GCSE RESULTS

Source: Management Information and Research Team (CYP) using Results Day information from schools.

### 2015 North Somerset Indicative Results



A-Level Results (colour coding compared to 2014 School or College Indicative Results)																	
School/College		Percentage of Results By Grade						% A*-A	Pass Rate % A*-E	% AAA in any subjects	% AAB in any subjects	% AAA in facilitating subjects*	% AAB in facilitating subjects*	APS per A level entry	APS per candidate	Total no. of entries	% of students achieving at least 2 Level 3 qualifications
		A*	A	B	C	D	E										
Backwell School	2015	10.5	17.4	24.1	26.0	16.8	4.1	28.0	99.0	15.0	19.8	9.0	13.4	227.6	654.0	493	100.0
	2014	7.0	18.5	20.1	27.3	16.7	7.0	25.5	96.6					217.1		549	
Churchill Academy and Sixth Form	2015	6.3	13.1	29.3	24.8	16.8	7.1	19.4	97.4	8.4	26.9	3.4	5.9	217.6	627.8	351	95.8
	2014	6.7	15.8	29.0	26.1	16.1	5.3	22.6	99.1					224.4		337	
Clevedon School	2015	10.7	19.2	20.3	23.2	19.2	6.8	29.9	99.4	14.7	27.9	11.8	16.2	226.3	668.7	177	95.6
	2014	7.1	15.1	23.6	20.9	21.3	9.8	22.2	97.8					215.6		208	
Gordano School	2015	6.3	14.4	29.7	23.8	16.1	8.4	20.7	98.7	11.0	31.0	7.0	7.0	220.7	607.0	478	95.4
	2014	5.6	15.2	23.8	28.8	18.6	5.8	20.8	97.8					217.7		518	
Nailsea School	2015	8.2	11.2	16.4	25.4	18.5	9.5	19.4	89.2	8.9	4.5	5.6	2.2	195.1	629.6	232	92.1
	2014	6.4	16.1	24.2	26.7	16.1	8.9	22.5	98.3					218.9		311	
St Katherine's School	2015	6.8	12.3	28.8	23.3	21.9	5.5	19.2	98.6	3.0	10.0	0.0	6.5	219.5	711.9	73	93.3
	2014	1.4	4.1	29.7	28.4	17.6	16.2	5.4	97.3					201.9		94	
Weston College	2015	9.3	16.9	20.4	25.9	18.3	7.9	26.2	98.7	6.0	1.0	6.0	1.0	221.6	221.0	378	94.0
	2014	10.8	23.6	26.0	16.6	11.1	9.5	34.5	97.6					227.7		486	
North Somerset	2015	8.3	15.3	24.6	24.9	17.5	7.0	23.6	97.6					219.6	588.6	2182	94.8
	2014	6.9	16.9	24.3	25.2	16.7	7.6	23.9	97.8	9.0	15.3		8.5	219.4		2503	99.0
England	2015	8.3	17.6	26.8	24.5	14.8	6.1	25.9	98.1							782325	N/A
	2014	8.6	18.1	26.3	24.2	14.9	6.5	26.7	98.6	10.3	17.4		8.7	225.2		742147	N/A

England 2015 source

<http://www.jcg.org.uk/examination-results/a-levels/a-as-and-aea-results-summer-2014>

England 2014 source: Tables 1d & 2

<https://www.gov.uk/government/statistics/a-level-and-other-level-3-results-2013-to-2014-revsed>

North Somerset 2014 source

figures are taken from last year's indicative results to allow for a fair comparison

Key: APS - Average Points Score

Data not available (new measures)

Key to A*-A, A*-E & APS columns
More than 5% points (15 APS) above 2014
Above 2014
Equal to 2014
Below 2014
More than 5% points (15 APS) below 2014



## 2015 North Somerset Indicative Results



GCSE Results (colour coding compared to 2014 School indicative results)																North Somerset Summary	England (All Schools)
School		Backwell School	Broadoak College	Churchill Academy	Clevedon School	Gordano School	Hans Price Academy	Nailsea School	Priory Community School - an Academy Trust	St Katherine's School	Worle Community School	Baytree School (Special)	Ravens-wood School (Special)	Westhaven School (Special)			
Net number of students eligible		2015	254	176	246	231	307	120	156	239	164	292	-	14	12	2,211	N/A
1	% 5+ A*-C GCSE (or equivalent) including English and Maths GCSEs	2015	74.0	52.3	60.2	57.1	73.0	37.5	59.6	69.9	51.8	43.2	-	0.0	0.0	58.8	N/A
		2014	81.0	41.0	70.8	54.5	67.0	47.0	60.0	69.0	51.9	53.0	-	0.0	5.6	60.2	53.4
		Target	72.0	55.0	73.0	66.0	76.0	43.0	73.0	69.0	61.0	60.0	-	N/A	N/A	65.6%	N/A
2	% 5+ A*-C (or equivalent)	2015	81.9	63.6	72.8	69.7	77.2	49.2	64.7	75.7	68.3	56.2	-	0.0	0.0	68.5	N/A
		2014	86.0	78.0	83.6	70.5	77.0	48.0	65.0	74.1	36.9	64.0	-	0.0	16.7	69.6	63.8
3	% 5+ A*-G (or equivalent)	2015	98.8	91.5	96.7	98.7	97.1	85.8	97.4	95.8	99.4	91.4	-	0.0	16.7	94.6	N/A
		2014	100.0	94.0	98.4	99.0	97.0	79.0	91.2	97.9	98.5	93.5	-	0.0	38.9	94.0	89.7
4	% A*-C GCSE in English and Maths	2015	76.0	52.3	59.8	58.4	75.6	40.8	76.3	74.1	54.9	44.2	-	0.0	0.0	61.6	N/A
		2014	Data not collected														55.5
5	% A*-C English or English Language GCSE	2015	79.5	59.7	73.6	68.0	83.7	51.7	80.8	85.8	66.5	55.5	-	0.0	0.0	70.8	N/A
		2014	84.0	55.0	86.0	64.0	74.0	58.0	72.5	77.8	67.7	67.5	-	0.0	11.1	70.7	N/A
6	% A*-C Maths GCSE	2015	86.6	63.1	69.9	72.7	83.1	53.3	69.9	79.1	65.2	55.8	-	0.0	0.0	70.5	N/A
		2014	91.0	49.0	75.6	71.0	80.0	56.0	77.2	77.8	62.4	68.0	-	0.0	11.1	71.3	N/A
7	2 A*-C Science (or equivalent) – note: two required	2015	84.3	58.5	58.9	63.6	57.7	9.2	43.6	80.8	46.3	58.0	-	0.0	0.0	58.9	N/A
		2014	91.0	51.0	60.8	63.5	60.0	13.0	52.4	87.4	42.9	53.0	-	0.0	16.6	59.6	N/A
8	A*-C Modern Foreign Language	2015	54.3	22.2	30.1	27.7	52.8	20.8	75.0	33.9	25.6	46.2	-	0.0	0.0	39.7	N/A
		2014	54.0	11.0	31.6	22.0	56.0	17.0	29.5	20.5	35.3	28.0	-	0.0	5.5	31.8	N/A
9	% A*-C Humanities: History or Geography - at least 1 full GCSE or equivalent (see footnote)	2015	65.4	35.8	54.5	40.7	61.6	15.0	82.1	39.3	40.2	51.9	-	0.0	0.0	49.9	N/A
		2014	70.0	20.0	53.2	52.0	69.0	20.0	42.3	40.2	44.4	53.0	-	0.0	5.6	48.6	N/A
10	% A*-C (in all qualifying subjects) English Baccalaureate	2015	42.9	17.0	N/A	22.1	26.7	4.2	24.4	16.7	18.9	6.2	-	0.0	0.0	20.8	N/A
		2014	50.0	7.0	27.2	17.0	25.0	10.0	20.8	15.1	18.8	16.0	-	0.0	0.0	21.6	N/A
11	% A*-G (in all qualifying subjects) English Baccalaureate	2015	65.4	24.4	N/A	24.7	41.0	11.7	42.9	25.5	28.0	13.0	-	0.0	0.0	31.9	N/A
		2014	Data not collected														36.1
16	Average Points Score – English	2015	43.0	37.8	41.1	40.9	42.2	36.8	42.0	45.5	40.0	37.5	-	9.3	23.2	40.6	39.7
		2014	43.6	38.2	44.8	39.9	41.0	35.3	42.0	41.8	40.4	38.6	-	5.3	16.2	40.2	39.2
17	Average Points Score – Maths	2015	43.6	35.9	40.3	40.8	42.9	33.0	42.0	42.6	40.0	35.1	-	5.0	34.0	39.7	38.6
		2014	44.7	34.6	41.6	40.2	41.0	31.2	40.0	39.3	34.7	38.3	-	4.8	15.6	38.6	36.7
18	Average Capped Points Score (Best 8 incl. English & Maths)	2015	347.7	294.7	N/A	324.1	335.6	263.2	316.0	328.3	314.0	292.5	-	-	-	316.8	N/A
		2014	363.0	391.0	349.0	325.9	339.0	240.7	306.1	327.0	398.0	375.0	-	12.4	N/A	337.5	303.0

Data sources  
 2014 North Somerset and schools data  
 2014 National data - DfE Performance Tables  
 English Baccalaureate subject lists  
 England 2015 figures not available until October 2015

figures are taken from last year's indicative results  
[http://www.education.gov.uk/schools/performance/download\\_data.html](http://www.education.gov.uk/schools/performance/download_data.html)  
[http://www.education.gov.uk/schools/performance/secondary\\_11/English\\_Baccalaureate\\_list\\_of\\_qualifications\\_Apr\\_2012.xls](http://www.education.gov.uk/schools/performance/secondary_11/English_Baccalaureate_list_of_qualifications_Apr_2012.xls)

Key
More than 5% points above 2014
Above 2014
Below 2014
More than 5% points below 2013

